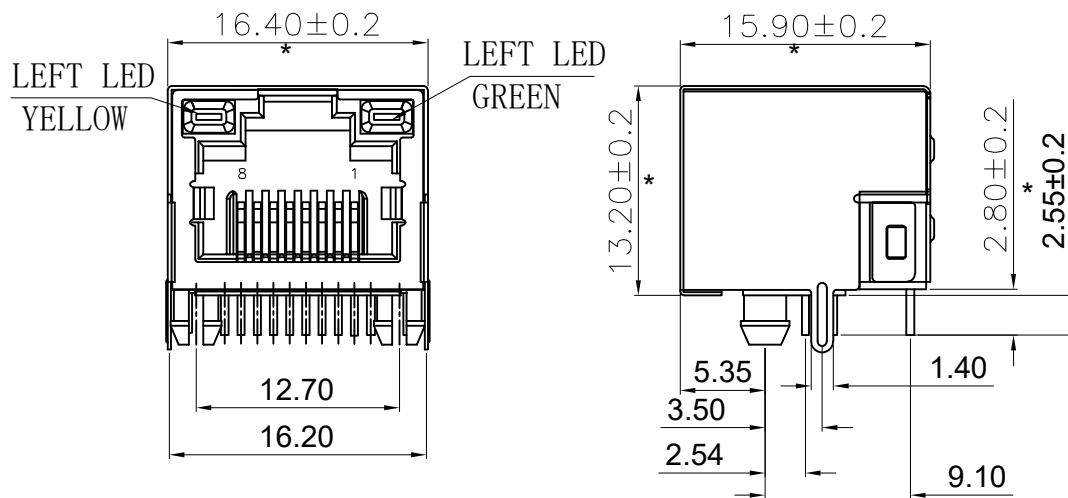
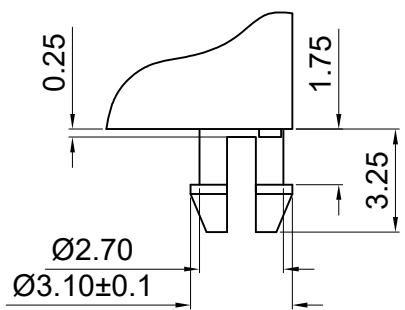
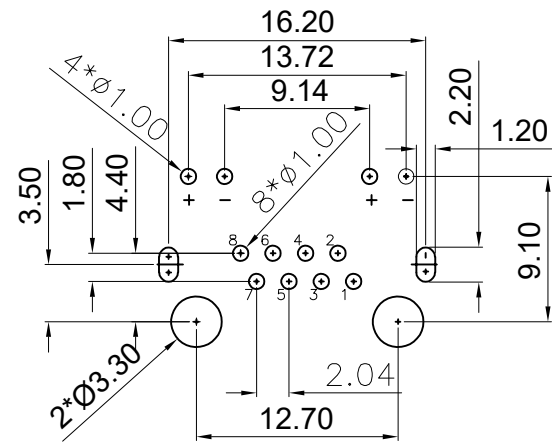
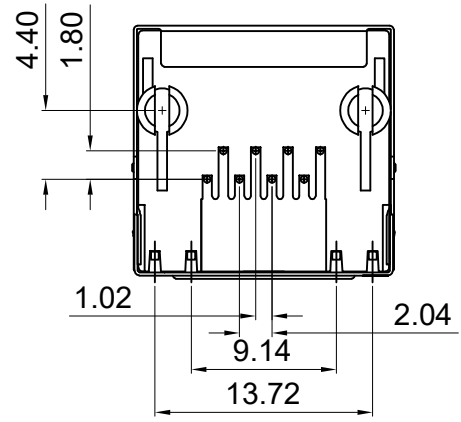


RoHS 2.0

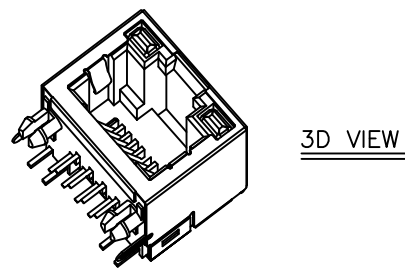
REV.	ECN NO.	DESCRIPTION	DATE	DESIGN
A1.	/.	重新核对图面	21.01.09	LiHui
		HD	22.06.07	LZR



- NOTES:
- MATERIAL:
    - HOUSING: PBT ,COLOR IS BLACK;
    - CONTACT: PHOSPHOR BRONZE,  $\phi 0.46 \pm 0.02$ mm;
    - SHELL: SUS T= $0.2 \pm 0.02$ mm;
  - FINISH:
    - CONTACT: PLATED GOLD OVER NI;
    - SHELL: NI OVER ALL;
  - REINFORCED PCB THICKNESS: 1.60mm;
  - ELECTRICAL:
    - VOLTAGE RATING: 125 VAC RMS;
    - CURRENT RATING: 1.5 AMP;
    - CONTACT RESISTANCE: 35MILLIOHMS MAX.;
    - WITHSTAND VOLTAGE: 1000 VAC RMS 50(60)Hz,1MIN.;
    - INSULATION RESISTANCE: 1000MEGOHMS MIN @500V DC;
  - MECHANICAL:
    - MATING/UNMATING FORCE: 25N MAX.;
    - RETENTION STRENGTH: 50N MIN.;
    - OPERATING LIFE: 750 CYCLES MIN.;
  - SALT SPRAY TEST: 12H (Excluding riveted bends);
  - SOLDERABILITY:  $245 \pm 5^{\circ}\text{C}, 5 \pm 0.5\text{S}$ ;
  - RESISTANCE TO SOLDER:  $260 \pm 5^{\circ}\text{C}, 10 \pm 1\text{S}$ ;
  - ENVIRONMENTAL:
    - STORAGE TEMPERATURE RANGE:  $-40^{\circ}\text{C} \sim +85^{\circ}\text{C}$ ;
    - OPERATION TEMPERATURE RANGE:  $-25^{\circ}\text{C} \sim +70^{\circ}\text{C}$ ;
  - MATES WITH: MODULAR PLUGS THAT CONFORM TO FCC REGULATION PART 68.500;
  - THE MARK WITH "\*" IS THE KEY INSPECTION DIMENSION FOR QC.



RECOMMENDER P. C. B. LAYOUT TOP VIEW  
(COMPONENT SIDE TOLERANCE  $\pm 0.05$ )



C	外壳	SUS	镀镍	
B	端子	磷铜	镀镍 镀金 (G/F)	
A	基座	PBT	黑色	
序号	品名	材质	电镀/颜色	备注

**深圳市虹成电子有限公司**

UNLESS OTHERWISE GENERAL TOLERANCE: X.xxx ±0.10 X.xx ±0.20 X.x ±0.30	NAME: RJ45带灯带壳		P/N: HCWLZ0057			
	DWG NO.:					
ANGULAR: X.xx' ±1' X.x' ±3' X.' ±5'	THIRD ANGLE PROJECTION	UNIT: mm	SCALE: 1:1	SIZE: A4	SHEET: 1/1	REV.: A1
	DRAWN:	CHECKED:		APPROVED		